



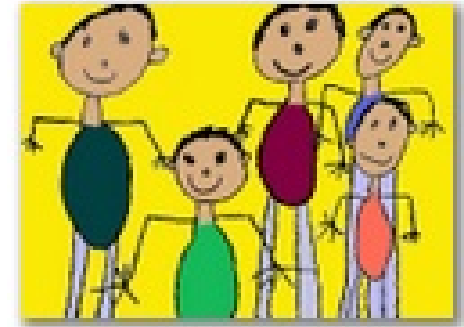
Come and Join Us!



College of Southern Idaho  
315 Falls Ave  
Twin Falls, Idaho 83301



## CSI EARLY CHILDHOOD EDUCATION LAB



Welcome!

### SCHEDULE:

Preschool (ages 3-5 years)

T/TH 8:30—11:30

OR

W/F 8:30 - 11:30

Fee: \$250 plus \$50 registration fee

Toddler (ages 18 months-3 years)

Tues/Weds 8:30—10:00

OR

Tues/Weds 10:30—12:00

Fee: \$125 plus \$20 registration fee

Early Childhood Education

Ellen Neff

Evin Fox

315 Falls Ave

Twin Falls, Idaho 83301

(208) 732- 6870

The Early Childhood Education Lab does not discriminate against race, color, national origin, gender, religion, age, disability, political beliefs.

The Early Childhood Education Lab at CSI has two related purposes:

**Provide** Developmentally Appropriate Early Childhood Experiences for Young Children.

**Provide** a Learning Lab for CSI Early Childhood Education Students





## Fostering Independence and Choice

The High-Scope model promotes independence. The children in our school are involved in “**real-world**” learning, and their creativity is nurtured as part of their learning experience.

## Learning Objectives

The CSI Early Childhood lab has a curriculum with identified outcomes. While individual children’s needs are met, the children are involved with materials that support **reading, writing and math** such as counting objects, and reading and writing a variety of ways.

## How does our program prepare children for Kindergarten?

### The program is Developmentally Appropriate.

The children in a preschool using High/Scope curriculum, are involved in meaningful, interesting “**work,**” rich with challenging experiences. Our teachers encourage the children to be active participants in their own learning.

### How do Play and Exploration prepare children for Kindergarten?

“Play” is a child’s work. Through play and exploring, children learn about what works and what doesn’t work. Research has shown that children who’ve been a part of a High/Scope program, mature into adults who are highly successful in their jobs and relationships, personal and professional.

## What is a Learning Lab?

The CSI Early Childhood Education Lab is a setting where faculty and staff provide a **guided apprenticeship** for college students as they work with toddlers and preschoolers.



## Involvement of Family and Community

It is our goal to support and nurture the relationship of the child and the family. We take time to meet with parents, share about the child’s day, and give the families ideas of ways to extend the child’s learning at home.

**NAEYC Accredited**